

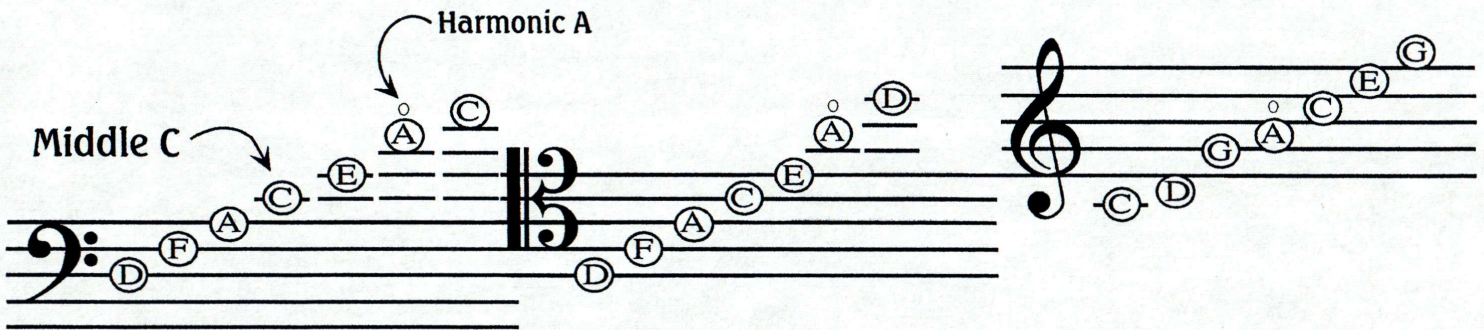
Scoring the Tenor Clef Dragon  
Mrs. M. W., Nancy Liebur, Wendy Bisstinger  
Bosny Press - available at Carriage Violins

# Cellists' Guide to the Clefs

Compare the position of Middle C on each of the clefs used by cellists (bass clef, tenor clef, and treble or "G" clef.)  
Note that the center of the tenor clef sign points to Middle C.



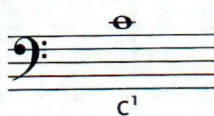
Compare the notes on the staff in different clefs. Note the position of the A harmonic on the staff in each clef.





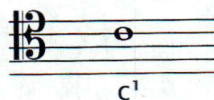
The tenor clef is a C clef. It shows you where the pitch  $c^1$  is notated.

Notation of C in bass clef:



*Sassmannshaus*  
*Early start on the*  
*cello - Vol 4*  
*Berenreiter*

Notation of C in tenor clef:



The tenor clef is used when we have to play pitches that would require too many ledger lines in bass clef. Here is an example:



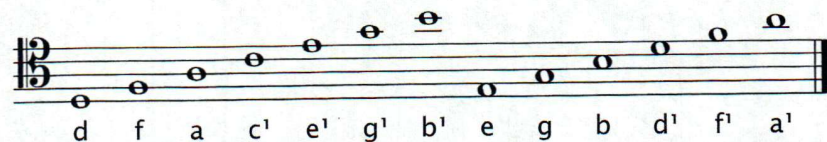
In the tenor clef it would look like this:



When the pitches are really high we sometimes use the treble clef in cello parts. In the treble clef our example would look like this:



The tenor clef is used frequently in cello literature. It is worth your time to learn it well. Don't rely on counting lines and spaces when it occurs. Concentrate on memorizing the notes on the D and A strings:



### Maike's Song

Michael Corssen

